

# CASA MARGHERITA

Italy Studio Summer 2016

Celeste Valle

## PROJECT STATEMENT

The land surrounding Casa Margherita will be designed to embrace and enhance the relaxation and restoration atmosphere of the villa. It will work to promote the ideals of harmony and balance as seen symbolically through the iconic linden tree. It will work to incorporate the history and culture of the region thereby enhancing and preserving its sense of place. All of this will be achieved through a low-impact development and sustainable design.

## GOALS AND OBJECTIVES

- Low impact development
  - Sustainable design- local materials
  - Preservation of existing vegetation
  - Avoid wildlife barriers
- Connectivity
  - Connect villas and provide interaction between the two
  - Connect villa to town and surrounding area
  - Connect villa to landscape
- Embracing History and Culture
  - Preservation of Historical character
  - Re-use of original materials
  - Create a sense of place
- Holistic healthy lifestyle
  - Enhance physical and social health
  - Create connection and respect for the environment
  - Create a sense of belonging that evokes the continued need for a healthier way of life

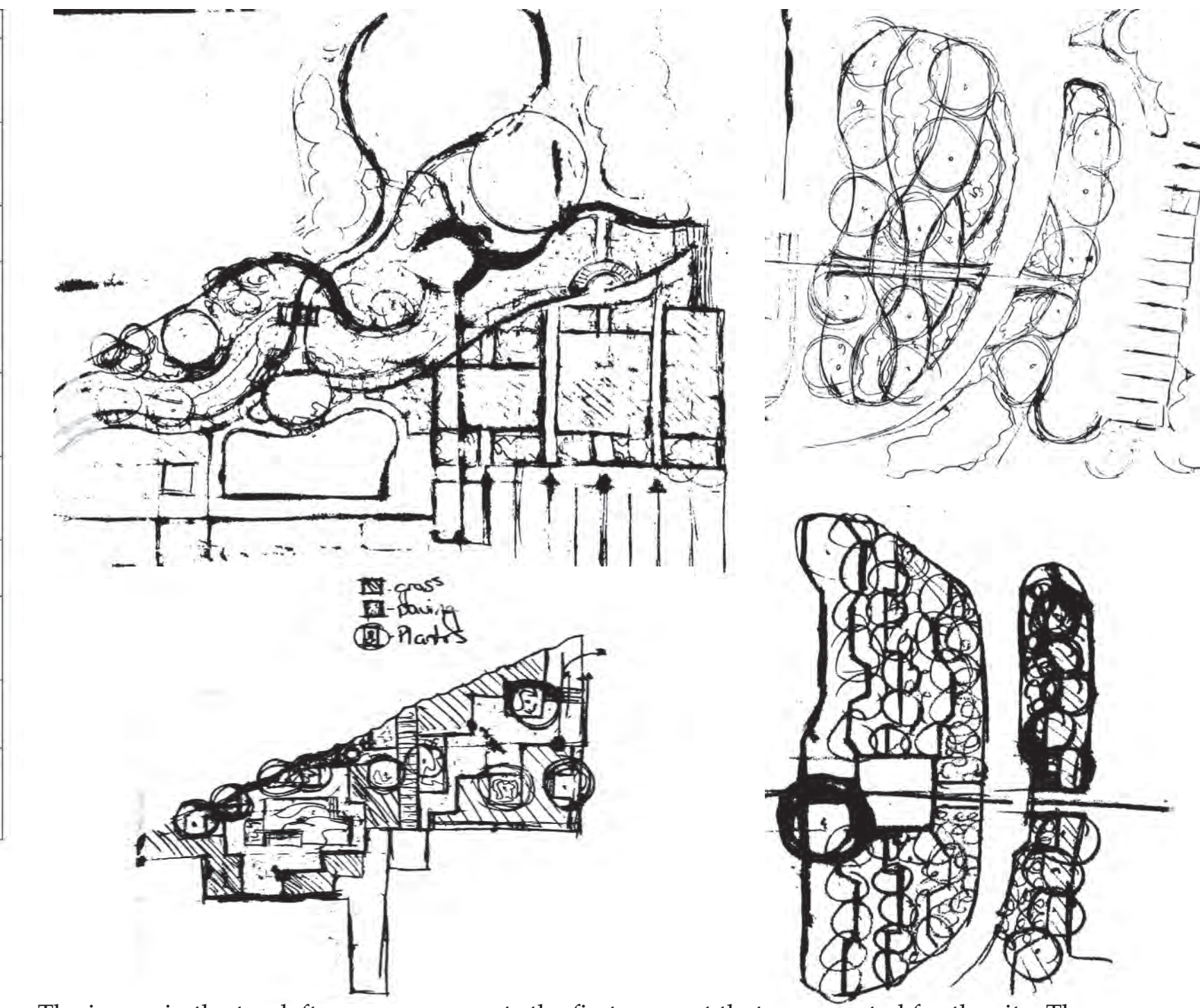
## LOCATION



## PROGRAMMING

Objective	Experience	Requirements
Use and reuse of local materials	To create a space that not only helps the local economy but also helps to preserve the historical character of the site.	-reuse of materials removed from the structure. -re-use of any wood removed from landscape. -planting of native and historical plants
Permaculture plantings	To create an area where the plantings not only provide the purpose of being aesthetically pleasing but also have a purpose as a food source.	-Most plants provide either an edible element or medicinal/herbal use.
To strengthen the path between the villas.	To create a clear path for easy access linking both villas together.	-wayfinding signs -path maintenance (gravel path/ overgrowth removal)
Provide areas for guests to rest throughout the site	To create areas where guests can relax and enjoy their surroundings of the vineyard and nature.	-access to meditation platform on pond -benches and patio areas -Overhead cover to provide shade and protection from other weather elements
Increase accessibility by vehicles	To create attention to the villa and providing areas of easy accessibility for guests to arrive.	-Restoration of access roads -wayfinding signs -parking area for guests and staff
Provide areas are easy access to areas that promote physical health	To create a path system as well as access to the surrounding path systems to provide areas for guests to enjoy strengthening their physical health.	-create a connection of trails through the site -provide wayfinding signs for the Red Thread Trail
Sustainable energy	Providing sustainable practices of creating energy to follow in the vision of the villa	-solar panels -Aquaponics
Creating an event area	To provide an area where the guests could relax and enjoy the various special events that are held by at the villa, such as guest speakers or classes.	-large open area for events -Provides an area for seating for at least 25 guests
Providing space for the addition of horses on the property.	To provide an area for the future ownership of horses for guests to ride and enjoy as an additional amenity	-Area designated for a Horse stable -Area for composting horse manure
Use of appropriate plantings	To create areas of plantings that reflect the history and sense of place but also are located appropriately	-plantings to help buffer noise from the busy road. -plantings that match the period and region

## EXPLORATION OF FORM



The image in the top left corner represents the first concept that was created for the site. The alternative plan created was chosen for the project because it was a more simple stronger design. The linear forms in the bottom left corner were used to help draw the architecture out into the landscape and create more intimate spaces in the landscape. As the forms progressed up the hill they become more natural and fractal in the landscape.

## SITE PLAN

DROP OFF AREA

POOL

WOODED PATH WITH BENCHES

OPEN GREEN AREA

PERGOLA COVERED WALK

GROTTO AREA

POND

OUTDOOR EATING/ EVENT AREA

RETAINING WALL

DROP OFF AREA

PLAZA AREA

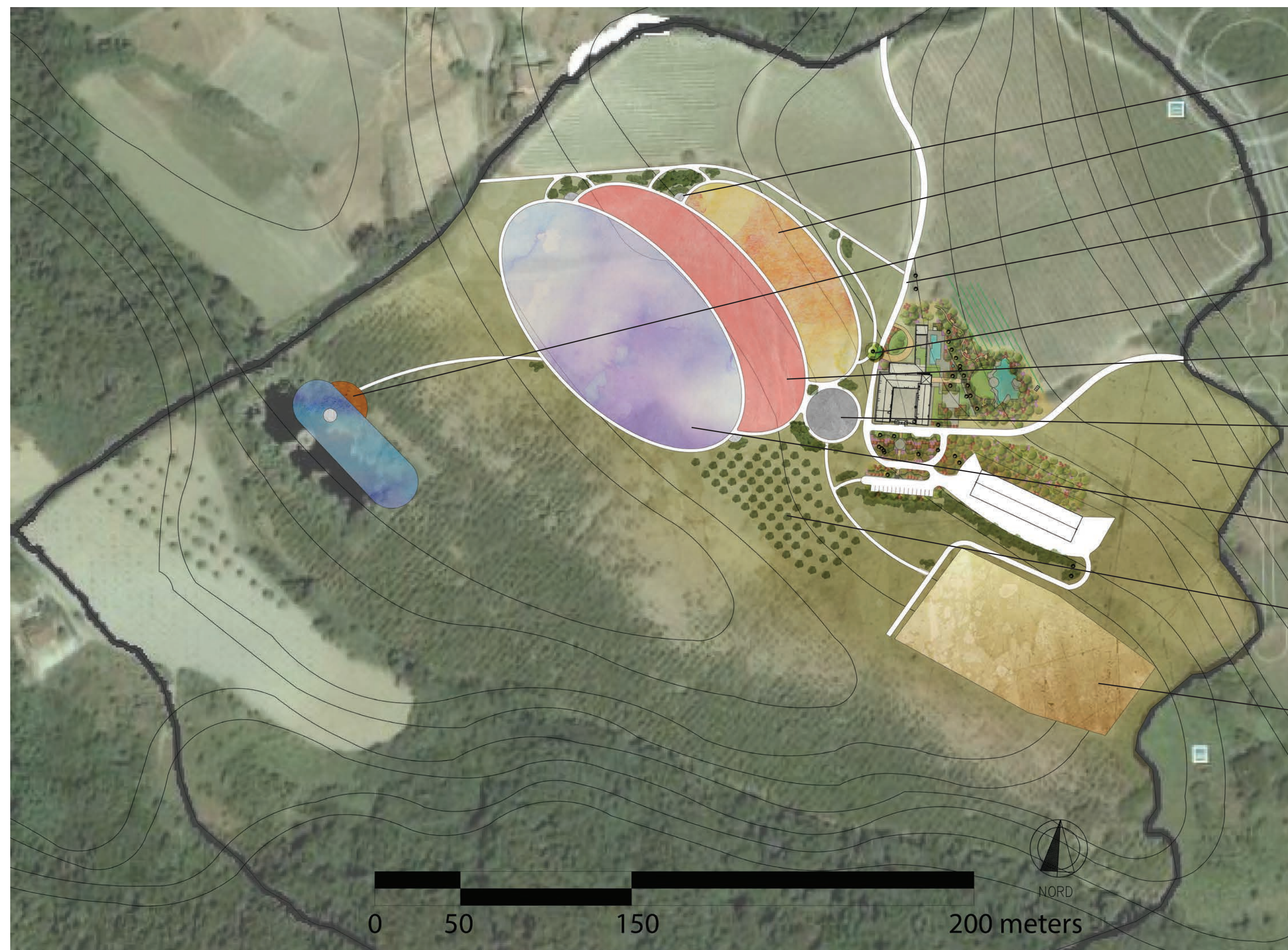
RETAINING WALL AND STAIRS

PARKING

AQUAPONICS AND STORAGE



## MASTER PLAN



SEATING AREA

WILDFLOWER FIELD

LAKE MEDITATION AREA

ROADS AND PATHWAYS

SYMBOLIC LINDEN TREE

POPPY FIELDS

PLAY AREA

MEADOWS

LAVENDER FIELDS

ORCHARDS

PASTURE LAND FOR FUTURE HORSES

PASTURE LAND FOR FUTURE HORSES

PASTURE LAND FOR FUTURE HORSES

PASTURE LAND FOR FUTURE HORSES

PASTURE LAND FOR FUTURE HORSES

PASTURE LAND FOR FUTURE HORSES

PASTURE LAND FOR FUTURE HORSES

# CASA MARGHARITA

Italy Studio Summer 2016

Celeste Valle

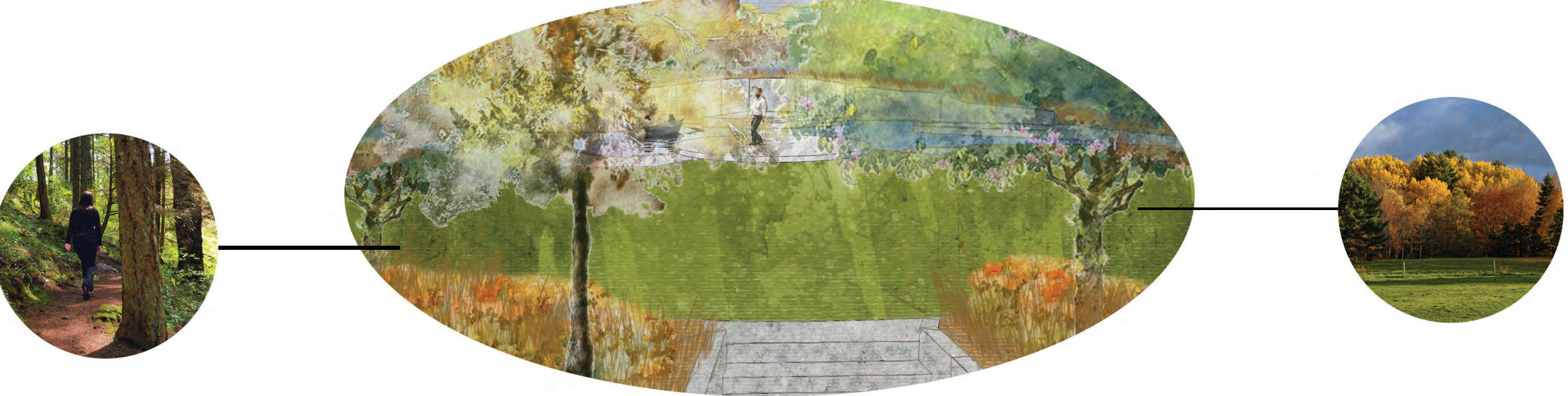
## PERSPECTIVES



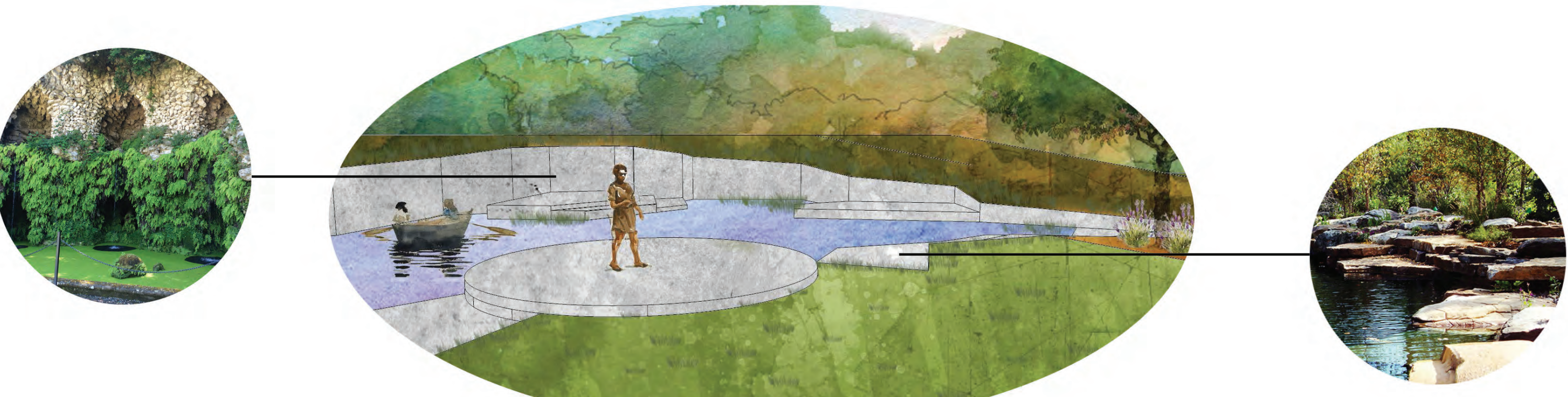
A. The perspective above shows the secondary drop off site of the Casa. This allows for some people to drop off guests and luggage near the lobby but it also allows for easier access for maintenance vehicles. All the utilities of the building are located along the building that falls under the pool deck so easy access to these is desirable. The call out images show a loose representation of what the center planting area is envisioned to look like and the other call out shows a picture of the symbolic linden tree of Casa Margherita.



B. The perspective above illustrates the pool area. The pool reflects the geometric forms that can be found throughout the entire area below the retaining wall. Also displayed within the perspective is how the landscape is carried out over the pool deck incorporating the deck into the landscape. The image on the left shows the vision of the pool and how the hot tub spa would be incorporated into the pool. The image on the right shows how the stairs would look with the turf extending out onto the deck area.



C. The perspective above shows how the area above the retaining wall would look. The users of the site would come up the stairs hidden in the wall to find that the trees and landscape open up above to reveal an open green space with a pond at the opposite end. The left image demonstrates what the hidden pathway that can be found along the edge of the open green space would look like as it led you through the forested area. The image on the right demonstrates visually the contrast between the vastness of the green open space against the dense forested background.



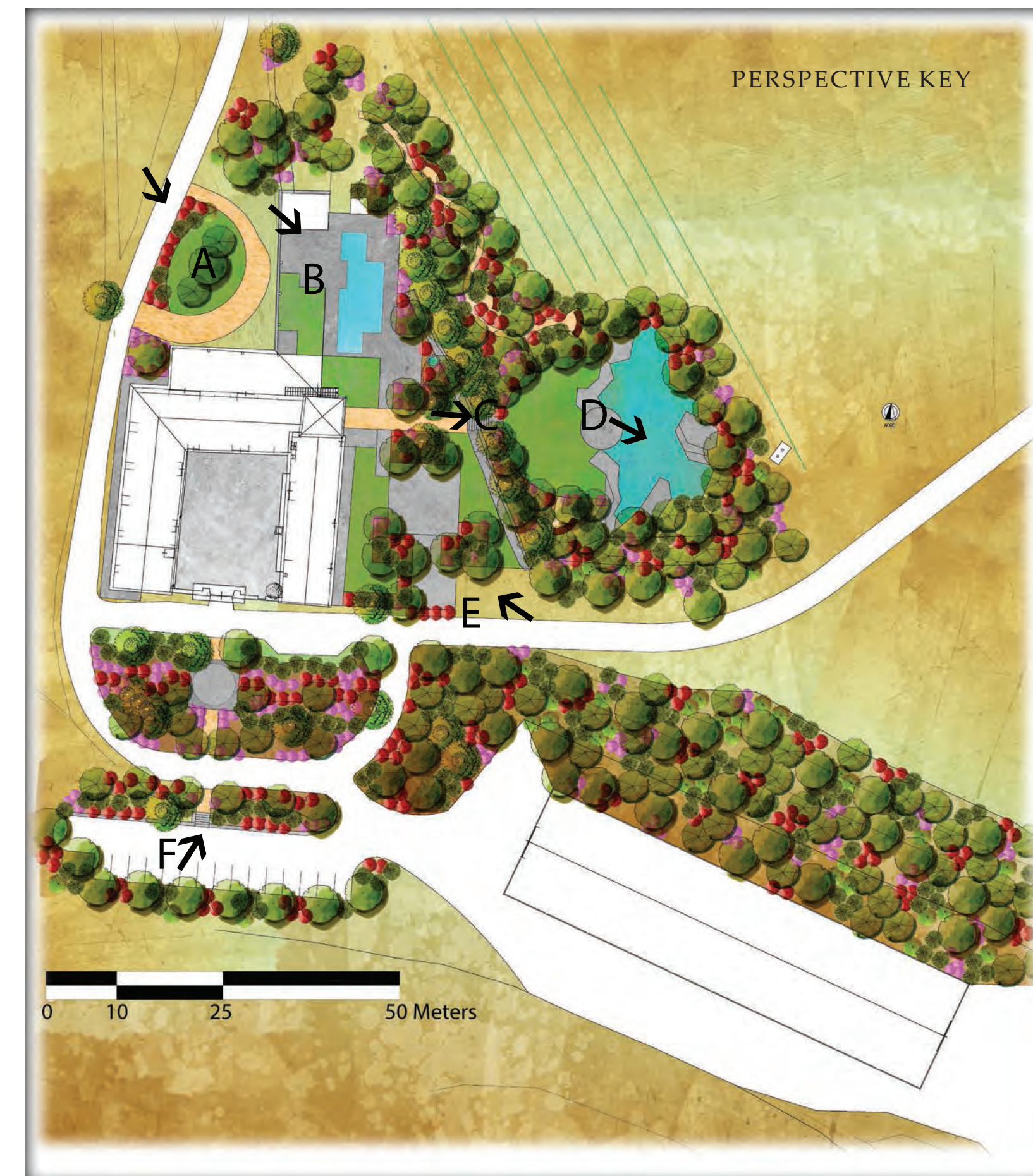
D. The above perspective shows what the pond area would look like with its rocky outcropped edges that would wrap around to the back area of the pond where the change in elevation occurs. The image on the left demonstrates how the back wall of the pond contains a grotto element that can only be reached by row boat across the pond. The right image shows what the edge of the pond looks like and how the rocks step down to meet the water level.



E. The perspective above illustrates the outdoor eating and activity area located just East of the building. The space provides large areas for gatherings but with the placement of plantings it also provides more intimate spaces as well. The image on the left shows the vision of how the pergola would look planted with vines growing on it. The right image shows loosely how the retaining wall would look with the stairs built into them. This retaining wall would stay as the existing stone and the stairs would also be constructed of the existing stone.



F. The perspective above demonstrates how the terraces gradually step down the landscape creating the main entrance area. As they reach the bottom there is one set of stairs along a retaining wall that leads to the parking lot. This terracing with the plantings not only provides a practical and aesthetic view for the landscape but it also helps to hide the view of the cars. The image on the left shows the inspiration for the terraces found at Villa Farnese. The image on the right illustrates what the retaining wall with the stairs at the base of the parking lot would look like.

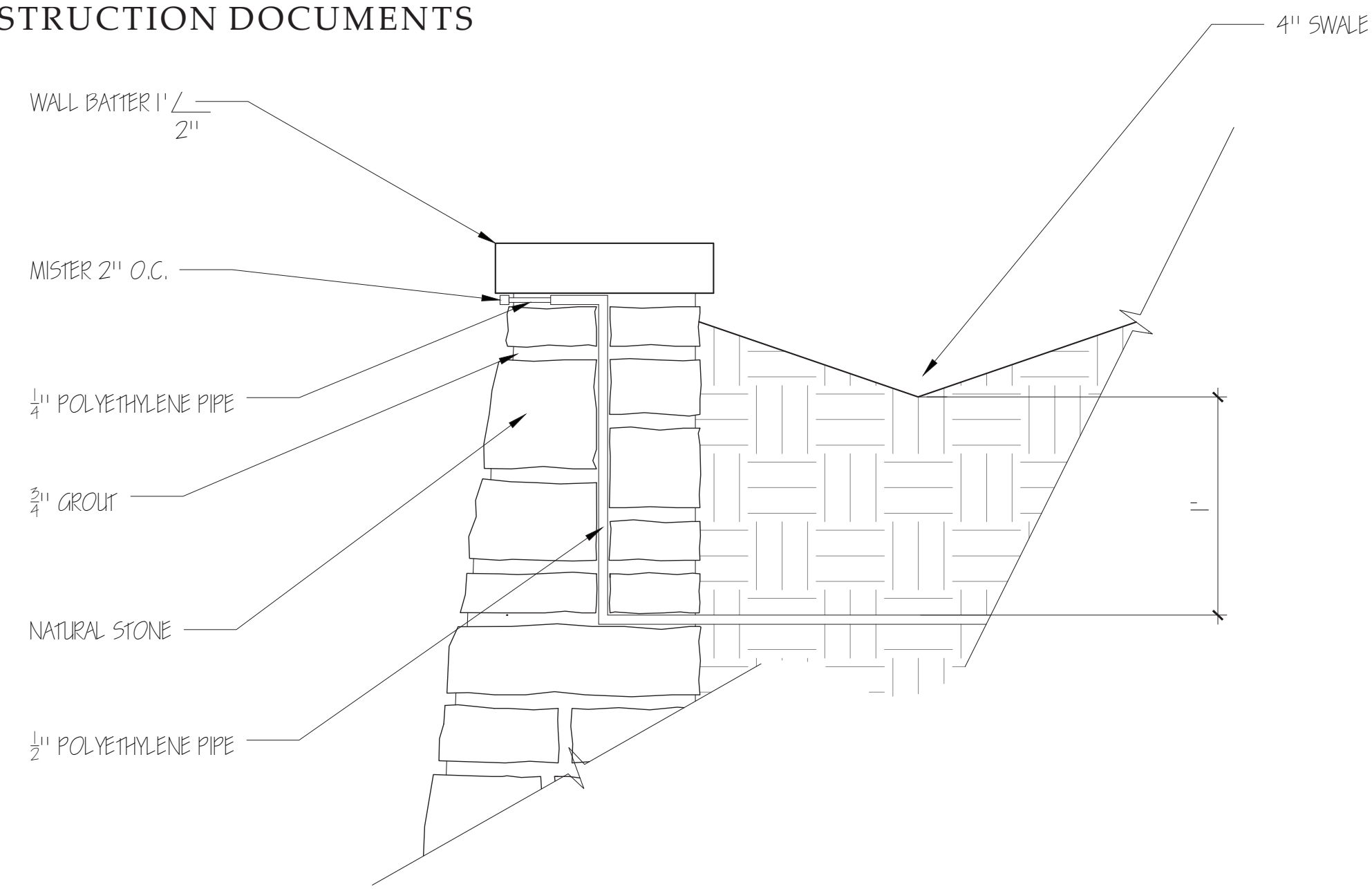


# CASA MARGHARITA

Italy Studio Summer 2016

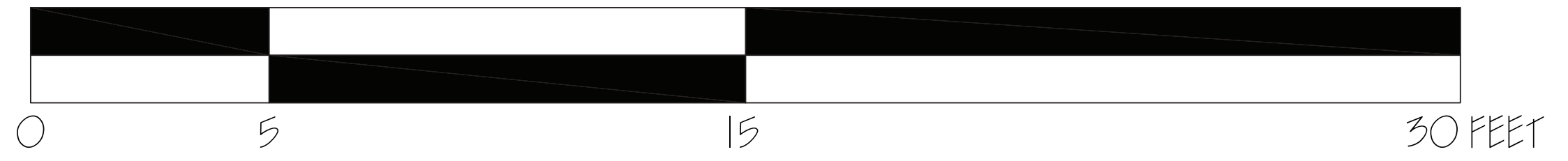
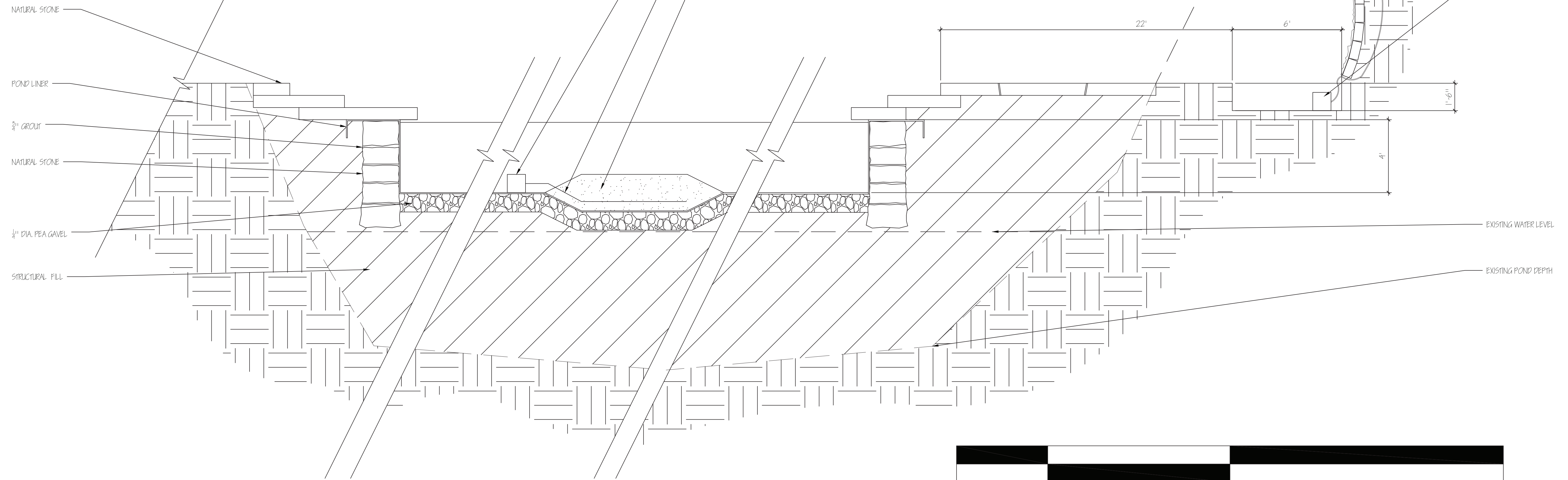
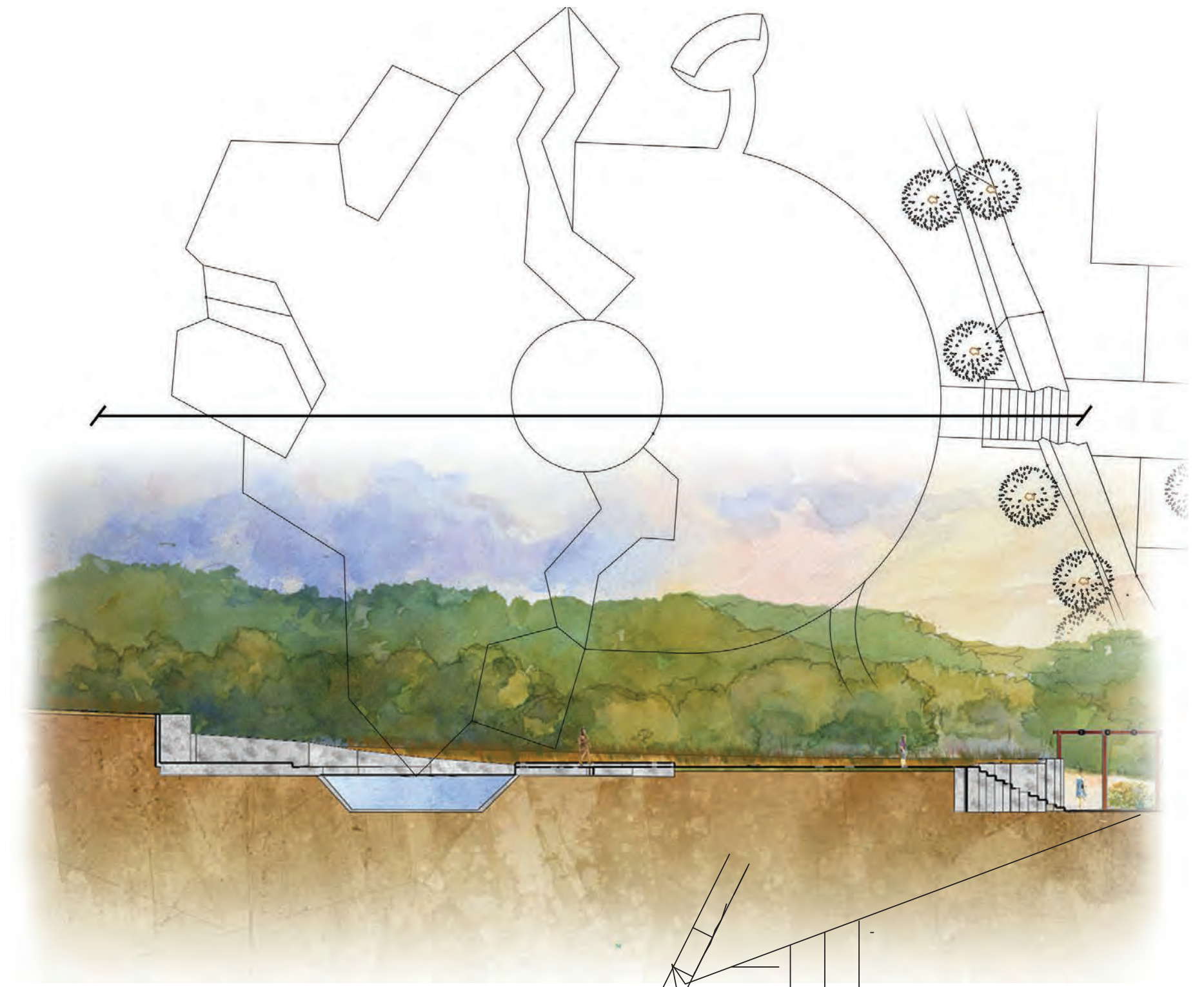
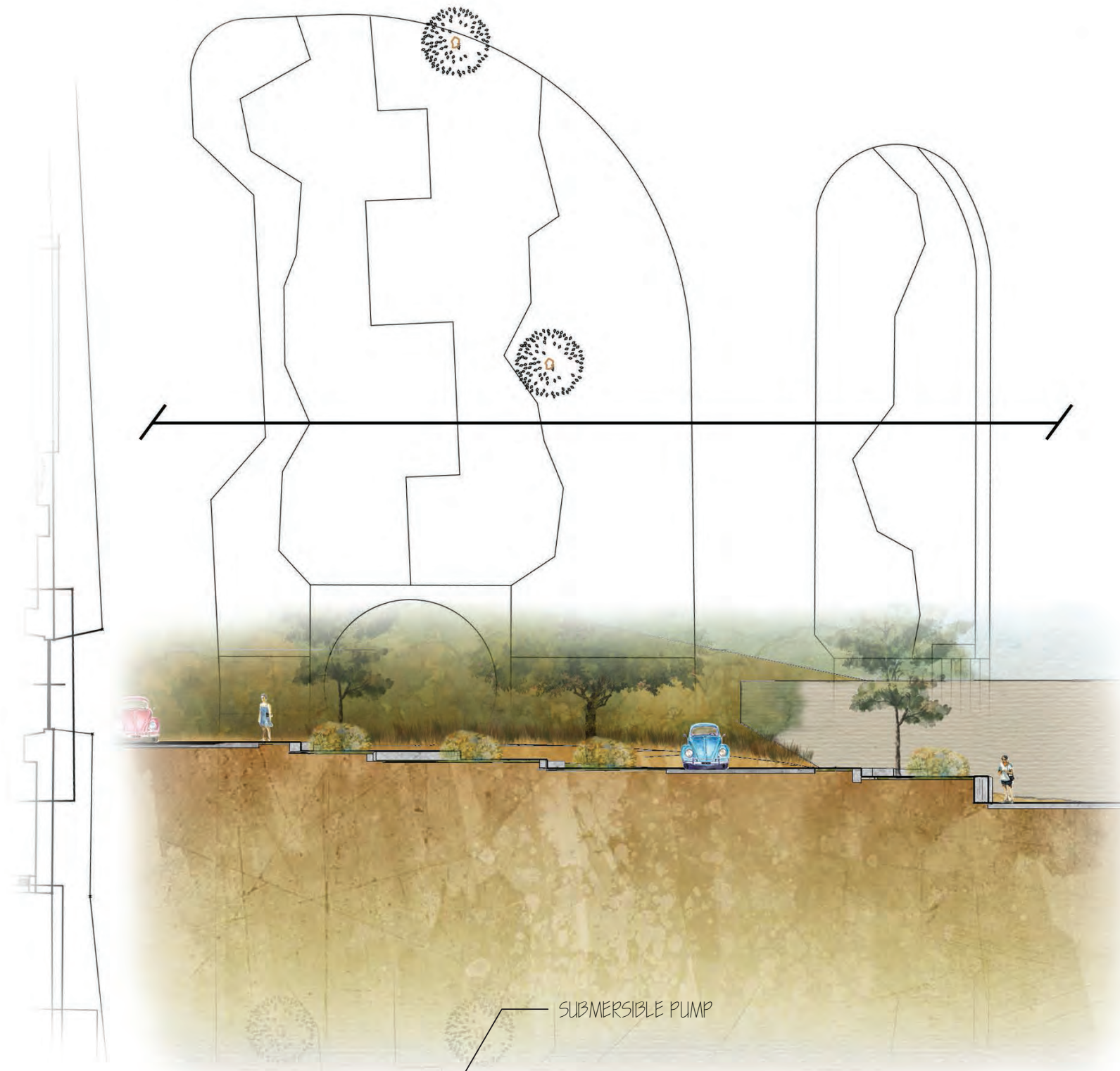
Celeste Valle

## CONSTRUCTION DOCUMENTS



1 WALL MISTER DETAIL  
NOT TO SCALE

## SECTIONS



The sections in the top right corner demonstrate how the design works with the land and how the change in elevation occurs with them. The section on the left demonstrates a cross section of the formal entry to the courtyard all the way from the parking lot. It shows how the terraces step down and interact with the loop that is used by the cars. The section of the right demonstrates the pond and how it is cut into the hill side as the topography gradually gets steeper the farther back the pond reaches. The smaller construction document shown demonstrates the idea of misters being placed in the wall as you walked up the stairs and into the open green space where the pond is found. The misters would help to create a mysterious feeling and cooling effect as you walked through them into the hidden area beyond. The larger construction document demonstrates how the pond would be constructed so that the elevation met with the proposed design and how the grotto would be built into the back wall.