



University of Idaho

Housing and Residence Life



INTERNATIONAL STUDENT HOUSING GUIDE - SPRING 2023

Welcome to Housing and Residence Life, your home away from home while you attend the University of Idaho! We are excited to welcome you to the Vandal Family for the 2023 spring semester. Please use this guide as a reference to ensure that you are prepared for your move into campus housing.

BEFORE YOU ARRIVE CHECK LIST

RESERVE YOUR HOUSING

The University of Idaho requires all full-time, first year students under 21 years of age to live in organized living groups officially recognized by the university (residence halls, fraternities and sororities) for one academic year.

Reserving your Living Option: Reserve your housing prior to your arrival. For students living in the Residence Halls you can apply for housing at iwanthousing.uidaho.edu. Students can view their options on pages 2-4 of this guide or online at uidaho.edu/housing.

Residence Halls: Residence Halls are geared towards first, second, third and fourth year students working on their undergraduate degrees. Registration opens in November each year. Some of our more popular options may already be full from the fall semester.

On Campus Apartments: On Campus Apartments are available for non-first year students, graduate students, or students with families. The apartment application opens in early April the previous year and we generally have more interest in apartments than we can supply. We encourage you to apply as soon as possible once the application opens if you are interested in renting one of our on campus apartments.

Checking Into Your Room: All Students must notify Housing and Residence Life of their arrival date and time prior to arriving on campus. Please notify us using the selection form located in your housing application. The form can be found at iwanthousing.uidaho.edu, under "My Housing."

You may check-in to your room starting Saturday, January 8 at noon Check-in takes place in the Living Learning Communities Building 2. If the Vandal Card Office is closed a temporary access card may be issued.

Early Arrivals: Are you arriving before January 8th? Requests must be submitted at least three full business days before arrival. Requests received less than three full business days before arrival will not be approved.

Early arrivals begin January 6th and end January 8th at 12:00p.m. **Early arrival is ONLY for students who have completed their housing application** and will be living on campus for the Spring 2023 academic term.

A \$35/per night early arrival fee will be placed on your student account.

ORDER YOUR VANDAL CARD

A Vandal Card, the official student ID, is required to get into your residence hall and use your meal plan. Upon your arrival, you can pick up your card in the Vandal Card office, located in the ISUB. To order your card, visit uidaho.edu/vandalcard.

In the event the Vandal Card Office is closed upon your arrival you can pick up a temp card at the Info Desk when you check into your room.

AIRPORT TRANSPORTATION

FREE Shuttle from Pullman-Moscow Regional Airport for Spring '23 Arrivals. Students flying into the Pullman-Moscow Regional Airport (PUW) for the Spring '23 semester are invited to request a free shuttle ride from the airport to campus, offered by Parking and Transportation Services.

Request a ride at uidaho.edu/PUWAirportShuttle. Shuttles will be offered for flights arriving at PUW prior to 7 p.m. between January 7-10. Need more info? Contact parking@uidaho.edu or **208-885-6424**.

INTERNATIONAL STUDENT ORIENTATION

Join the International Programs Office on **Tuesday, January 10th** for your mandatory International Student Orientation. At the orientation you will be introduced to other first year students as well as the International Programs Office Staff. Located in the International Ball Room. **You will be charged a late orientation fee if you do not attend the orientation.**

SIGN-UP FOR VANDAL WELCOME

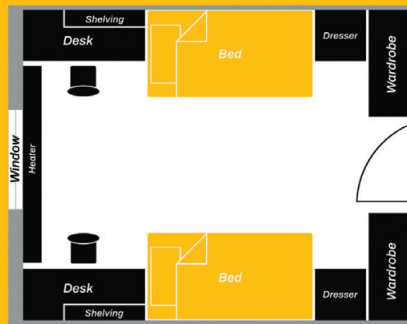
Sign up for New Student Orientation. New Student Orientation isn't just one event - it's a welcome to your new home on the University of Idaho campus. Sign up to join the fun at <https://uidaho.edu/orientation-signup>.

Parents, we have orientation for you, too! Join us on Monday, January 9th for a day of getting to know your student's new community. Check out the parent orientation schedule at <https://uidaho.edu/orientation-signup>

Theophilus Tower

The First-Year Experience

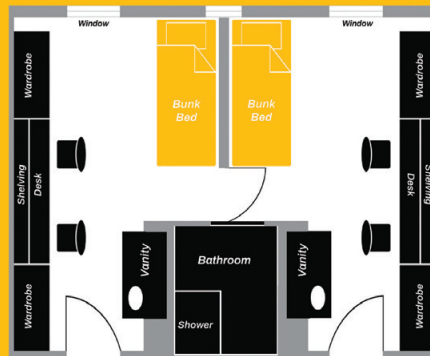
A popular choice for first-year students, the Tower provides support and guidance to students transitioning from high school to college. With eleven stories, you will never have to go very far to find fun, excitement or to hang out with friends.



Wallace Residence Center

Everything in One Place

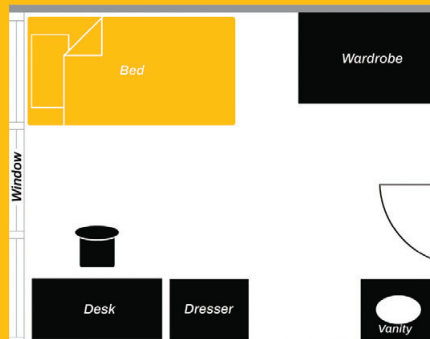
Home to both first-year and non-first year students, Wallace is centrally located and also houses the Student Success Program and our main dining center, The Eatery. Featuring suite style living with private bathrooms, you can enjoy privacy and still experience residence hall living.



McConnell Hall

Looking for a Mature Living Environment?

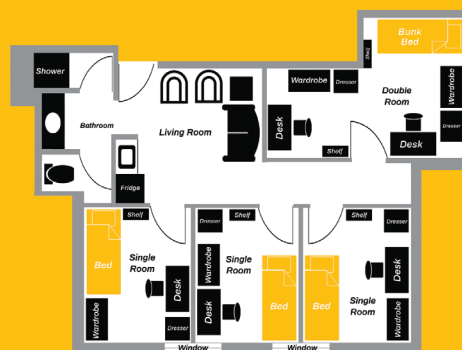
With single rooms, McConnell is perfect for students wanting a more private and academically focused living environment. Non-first year students have the convenience of residing on-campus while living in a quiet, safe and friendly community.



Living Learning Communities

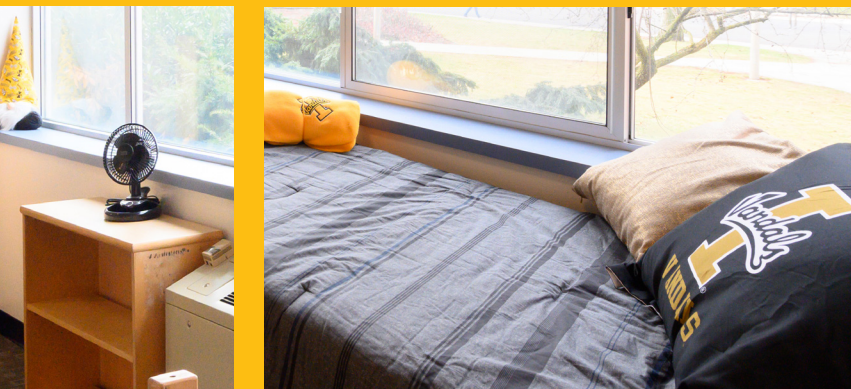
Combining the Best Qualities of Academic and Social Living

Comprised of eight buildings, each provides its residents with an atmosphere dedicated to academic success, student support, and activities geared for social enrichment. Most LLC buildings are reserved for non-first year students. First year housing is available in Upham and CNR buildings.



Typical room layouts shown. Actual layout and configurations may vary.

For more detailed information and room 360s, please visit our website uidaho.edu/housing



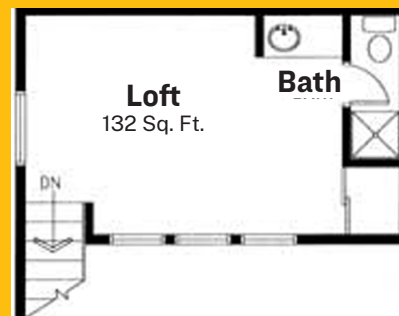
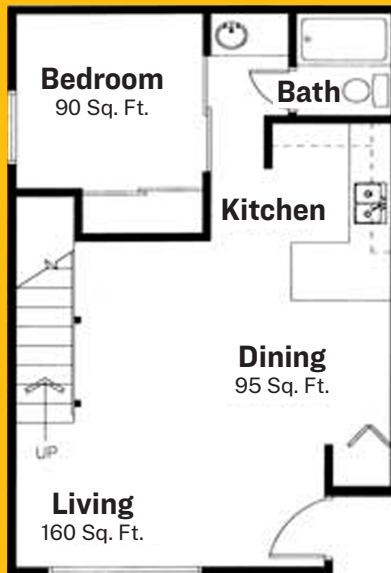
	THEOPHILUS	WALLACE	MCCONNELL	LIC	STEVENSON 2ND & 3RD
--	------------	---------	-----------	-----	---------------------

First Year Students	●	●		●	
Non-First Year Students		●	●	●	●
Double Rooms	●	●		●	
Single Room Option			●	●	●
Suites		●		●	●
Bathroom Style	Community	Private	Community	Private	Private
Floor Type	Tile	Carpet	Carpet	Carpet	Laminate
Co-Ed Floors		●		●	●
Single Gender Floors	●		●		
Gender Inclusive Living		●		●	
Academic Themes	●	●		●	
Mini-Fridge	●	●	●		●
Refrigerator				●	
Microwave	●	●	●	●	●
Community Kitchen		●	●	●	●
WiFi	Included	Included	Included	Included	Included
Laundry	Included	Included	Included	Included	Included
Lounge	●	●	●	●	●
Student Area	●	●	●	●	●
Computer Lab	●	●	●		●
Number of Residents	360	800	55	550	153
Bed Size	Twin XL	Twin XL	Twin XL	Twin XL	Twin XL
Open During Winter Break				●	●

Elmwood Apartments

Right in the Heart of Campus

Elmwood Apartments offer studio, one-bedroom and loft-style apartments. Located on Elm Street, in the heart of campus near the Bruce M. Pitman Center, Engineering Buildings and the VandalStore. There is no laundry facilities located in the Elmwood Apartments. Residents will need to utilize a local laundry mat.



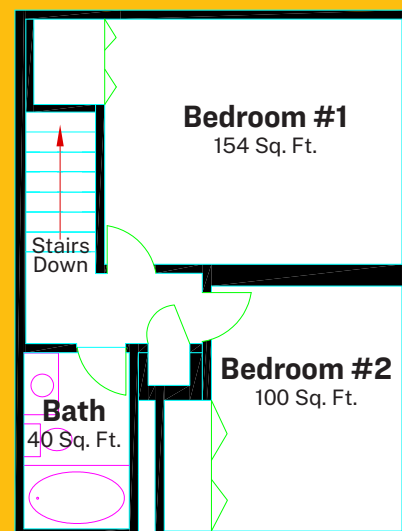
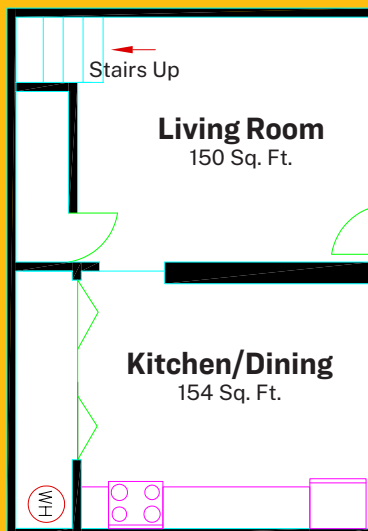
*One bedroom floor plans are the same layout minus the Loft

**Studio floor plans are the same minus the loft, bedroom window and bedroom door.

South Hill Apartments

Great for Graduate Students

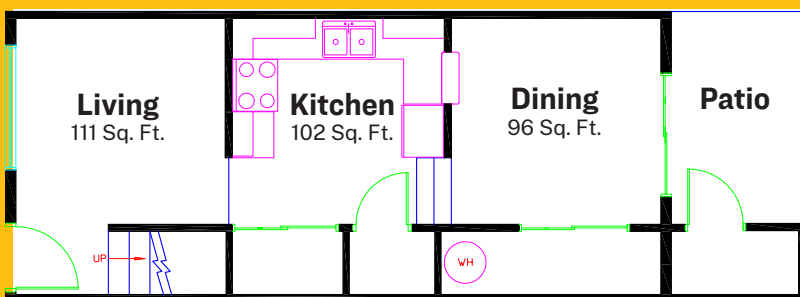
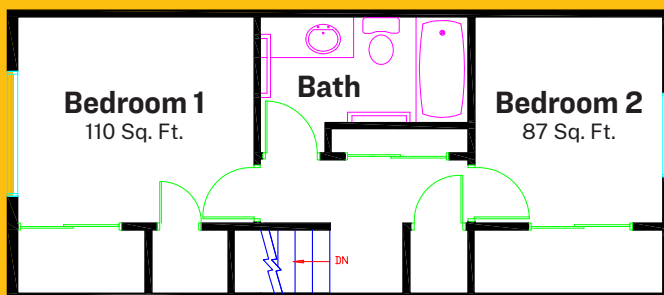
South Hill Apartments offer one, two, three and four bedroom townhouse-style units. Apartments are located on Deakin and Taylor Avenue. Electric hookups are available for washer and dryers.



South Hill Vista Apartments

Perfect for Families

South Hill Vista Apartments offer two and three bedroom townhouse-style units. Apartments are located on Sweet and Taylor Avenue which is close to the Early Childhood Learning Center. Electric hookups are available for washer and dryers. All units also feature a back patio and storage.





Elmwood

South Hill

South Hill Vista

	Elmwood	South Hill	South Hill Vista
Ages Below 25	●		
Ages 25+	●	●	●
Studio	●		
1 Bedroom	●	●	
Loft	●		
2 Bedroom		●	●
3 Bedroom		●	●
4 Bedroom		●	
Number of Bathrooms	1-2	1	1
Floor Type	Carpet & Laminate	Carpet & Laminate	Carpet & Laminate
12 Month Contract	●	●	●
6 Month Contract	●	●	●
WiFi	●	●	●
Laundry Hook-ups		●	●
Number of Apartments	24	79	108
Community Center		●	●
Family Friendly		●	●
Close To Day Care		●	●
Located On Campus	●	●	●

BEDDING INFORMATION

Students are required to supply their own bedding and linens including but not limited to sheets, pillows, blankets, towels and wash cloths. Please see the "Shopping Location" section for information on where to purchase bedding and linens.

Bed Size: Extra Long Twin Bed

RESOURCES

Academic Peer Mentor (APM): Our Academic Peer Mentors are student leaders who assist students living in our first-year communities. These mentors provide individualized support to help new students with academic skill building and transitioning to college-level work.

Resident Assistant (RA): Every floor has an RA who is there to help answer questions and help make your experience the best! Be sure to meet them when you arrive!

Program Coordinators (PC): Each living community has a PC who is responsible for setting up weekly activities for residents. There are also larger events each semester. Keep an eye out for these events and plan to attend with your neighbors and friends.

Apartment Community Assistants (ACA): Each Apartment complex has a dedicated ACA who is assigned to assist you with questions and other needs. Watch for apartment community events and programs which take place throughout the year.

Student Success Program (SSP): We are dedicated to helping students succeed academically. Students have access to peer mentoring, free tutoring, study spaces, computer lab and additional support resources. Be sure to watch for some great free events!

Residence Hall Association (RHA) The Residence Hall Association (RHA) is a student-led organization seeking to train leaders to represent their communities in advocating for the residence halls.

Specialized Communities: As you consider your housing options, we encourage you to look into our specialized communities which offer a jump start into a new group of friends. Specialized Communities include Academic Themed, Gender Inclusive Living and program specific communities. You can select a specialized community at iwanhousing.uidaho.edu.

PLAN YOUR PAYMENTS

All semester tuition, fees, residence hall and meal plan charges for on-campus housing, and health insurance can be paid at the Student Accounts Office, on VandalWeb or through wire transfer.

Student Accounts: uidaho.edu/student-accounts

SAFE WALK

Safe Walk is a service provided by Campus Security Team for University of Idaho students, employees and visitors. Call [1-208-885-7233](tel:1-208-885-7233) and Security will have an officer meet you anywhere on campus—and will then walk you to your on-campus destination.

SHOPPING AND EATING LOCATIONS

The following stores are a sampling of locations to help you gather any items you may need upon your arrival. For a larger list of locations please use "shopping" or "places to eat" in your online search.

Shopping Locations

Bed Bath and Beyond: Bedding & kitchen products

Moscow Co-Op: Groceries and hygiene products

Rosauers: Groceries and hygiene products

Safeway: Groceries and hygiene products

Staples: Office supplies and technology

Target: Home goods, groceries, clothing, bedding, school supplies, technology and hygiene products

Tri-State: Outdoor items and clothing

Vandal Store: Vandal gear, clothing and school books

Walmart: Home goods, groceries, clothing, bedding, school supplies, technology and hygiene products

Winco: Groceries and hygiene products

Farmers Market: Every Saturday - Fresh produce and food

International Grocery Stores

Phung-Mart: Asian grocery store

Taj Grocery: Convenience store

Shin's Asian Market: Asian grocery store

PNW Halal Meats: Fresh lamb and goat meats, fresh vegetables

Off Campus Dining & Eating Locations

Fast Food: McDonalds, Taco Bell, KFC, Subway, Taco Time, Panda Express, Wendys and Jimmy Johns

Sit Down Restaurants: Shari's, Applebees, Breakfast Club, La Casa Lopez, Slice, Ale House, and Mad Greek

Coffee: Starbucks, Dutch Bros, Red Star, Cafe Artista, One World Cafe and Panhandle Cone and Coffee



IDAHO EATS - MEAL PLANS

Just like you, we're foodies at heart. To learn about how your meal plan works, dining locations and hours, menus, allergy support, and more Visit dineoncampus.com/uidaho! Meal Plans begin on **Sunday, January 8 at dinner**.

Starship Robot Food Delivery - Pay with your Dining Dollars and have the robot bring food to your room or library study spot. Download the Starship Food Delivery App from the App Store to get started!

Boost Ordering - Customize your order, pay with your meal plan and skip the line at your favorite dining locations. Text BOOST to 99299 to get the app!



FACILITIES SERVICE REQUESTS

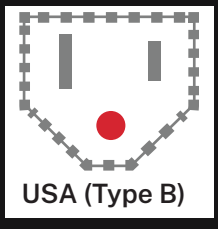
Our request form can be found at uidaho.edu/housing. Hover over "I want to" and select "request service." Please fill out the form completely so our team can address your needs.

FREE INTERNET / WI-FI CONNECTION

Use your NetID and password to connect to AirVandalGold and AirVandalHome. For questions or technical help contact ResNet, your free technical support, at support@uidaho.edu.

Electrical Outlets

All plugs in the residence halls are two prong with a round ground. Please ensure you have the appropriate adapter upon your arrival in order to ensure you are able to charge your devices.



INCLUDED IN EACH RESIDENCE HALL

There are a number of included amenities that are included with the cost of your room. There is no extra cost for the use of these items.

Internet: Wireless and hard wire connections are included in each room.

Laundry Services: Each building feature laundry rooms. Laundry is free for students (students must supply their own detergent) and there is an app available upon arrival to help tell students which machines are available.

Shared Kitchens: Wallace, McConnell and the Living Learning Communities all have shared kitchens that students can use to cook their own meals if desired. Students must supply their own utensils and cooking items.

Study Rooms: Each building feature study rooms so you can have a quiet place to work on your schoolwork.

Fridge and Microwave: Each room comes with a mini-fridge and microwave so you do not need to supply your own. The LLC's feature a full size share fridge for each suite.

LOOKING FOR TRANSPORTATION TO DIFFERENT LOCATIONS WHEN YOU ARRIVE TO CAMPUS? CHECK-OUT THE SMART TRANSIT BUS SCHEDULE WHICH IS FREE!



FIXED ROUTE SCHEDULE

Route Schedule Effective February 3, 2020

EAST/WEST SINGLE BUS SCHEDULE

- BUS STOPS
- 🆓 Ride Free!

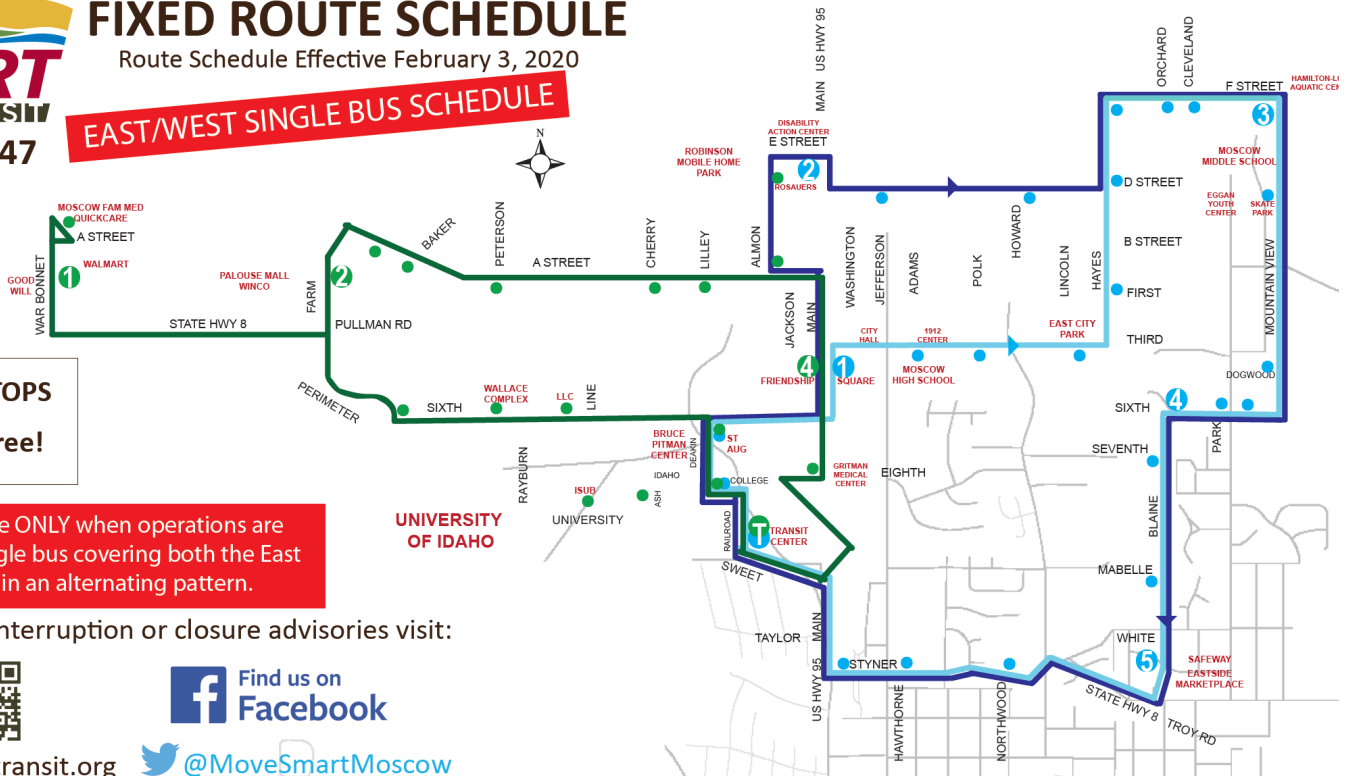
Use this schedule ONLY when operations are reduced to a single bus covering both the East and West routes in an alternating pattern.

For service interruption or closure advisories visit:



www.smarttransit.org

[@MoveSmartMoscow](https://www.facebook.com/MoveSmartMoscow)





RECOMMENDED SUPPLIES LIST

Need help deciding what to bring your first year at the University of Idaho? Use this list as a starting point for what is recommended to bring with you from home and what may be easier to purchase when you arrive. We recommend you contact your roommate prior to move-in to coordinate any shared belongings.

RECOMMENDED TO BRING FROM HOME

- Clothing for all seasons
- Personal laptop (See page 7 for recommended outlet details; Computer labs are available for residents)
- Computer: Surge protector(110 Volt), flash drive, mouse pad and mouse
- Headphones and charging cables
- Personal hygiene items: Toothbrush, toothpaste, brush, shampoo, deodorant, etc. (Can also purchase as well)
- Backpack
- Prescription Medications

ITEMS YOU SHOULD **NOT** BRING

- Heaters, candles, and incense
- Any open coil/open flame appliances (toaster ovens, hotplates, George Foreman Grills etc.)
- For a complete list of items that are prohibited, please check the residence hall handbook at uidaho.edu/residencehallforms.

RECOMMENDED TO PURCHASE WHEN YOU ARRIVE

- Bed: Sheets for XL twin bed with deep pockets (beds are 36"x80"), pillows and pillow case, comforter, mattress topper and blankets
- Toilet paper (Only in Wallace and LLC's)
- Towels, shower shoes and shower caddy
- First aid kit
- High efficiency laundry detergent
- Assorted cleaning supplies (toilet brush, disinfecting wipes, ect.)
- Hand sanitizer
- School supplies: pens, pencils, paper, markers, stapler, scissors, school backpack
- Organizational items: Under-bed storage drawers, closet organizer, hangers, etc.
- Decorative items (Wall space can be limited)
- Coffee cup, cutlery, plates, microwaveable containers, pots and pans (for cooking in community kitchens), fan and small vacuum
- Bicycle, helmet, bike lock
- Lanyard/Key chain



University of Idaho
Housing and Residence Life

Here for you, every day.

208-885-6571 | housing@uidaho.edu

   uidaho.edu/housing